



General dimensions

Length int. 5 1/2 in.
 Length ext. 2 1/2 in.
 Head dia. 2 1/2 in.
 Chin dia. 1 1/2 in.
 Depth 4 1/2 in.
 Displacement 7 1/2 cu in.
 Weight 17 1/2 oz.

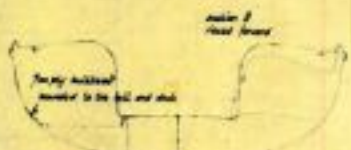
1-piece construction
 measurement of 1/2 inch
 measurement of 1/2 inch

Material: synthetic plastic to be fitted

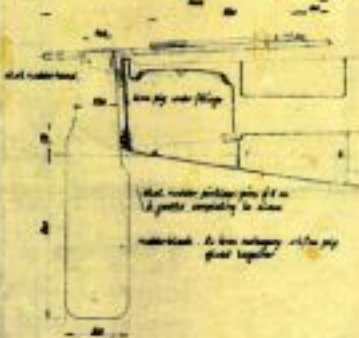


Laminates I

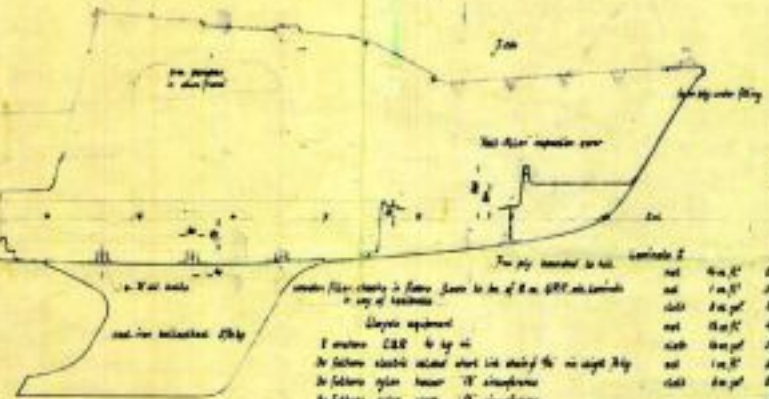
net	1 in. x 1/2	20 yd
cloth	1 1/2 in. x 1/2	20 yd
net	1 1/2 in. x 1/2	20 yd
cloth	1 1/2 in. x 1/2	20 yd
net	1 1/2 in. x 1/2	20 yd
cloth	1 1/2 in. x 1/2	20 yd



The top thickness measured to the ball and chin with 1/8 in. gap. No seam. 2 1/2 in. diam.



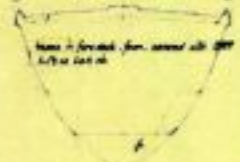
The chin strap is to be fitted to the chin with 1/8 in. gap. No seam. 2 1/2 in. diam.



Laminates II

net	4 in. x 1/2	20 yd
net	1 in. x 1/2	20 yd
cloth	1 1/2 in. x 1/2	20 yd
net	1 1/2 in. x 1/2	20 yd
cloth	1 1/2 in. x 1/2	20 yd
net	1 1/2 in. x 1/2	20 yd
cloth	1 1/2 in. x 1/2	20 yd

Section 6: Head view of the helmet. Text: 'Section 6 Head view', 'The top thickness measured to the ball and chin with 1/8 in. gap. No seam. 2 1/2 in. diam.'



Section 7: Head view of the helmet. Text: 'Section 7 Head view', 'The top thickness measured to the ball and chin with 1/8 in. gap. No seam. 2 1/2 in. diam.'



Laminates III

net	4 in. x 1/2	20 yd
net	1 in. x 1/2	20 yd
cloth	1 1/2 in. x 1/2	20 yd
net	1 1/2 in. x 1/2	20 yd
cloth	1 1/2 in. x 1/2	20 yd
net	1 1/2 in. x 1/2	20 yd
cloth	1 1/2 in. x 1/2	20 yd

Section 8: Head view of the helmet. Text: 'Section 8 Head view', 'The top thickness measured to the ball and chin with 1/8 in. gap. No seam. 2 1/2 in. diam.'



Weight: 17 1/2 oz.
 Displacement: 7 1/2 cu in.